



The Scientific Panel for Health

report on activities 2016-2017

Karin Sipido, MD PhD
Chair of the Scientific Panel for Health

In 2012 a proposal was put forward for a strategic, scientific-led action for health research and to create a “*European Council for Health Research*”



Alliance for Biomedical Research in Europe

<http://www.biomedeuropa.org/>

>> translated into Horizon 2020 proposal as
‘Scientific Panel for Health’

Who we are

- 27 experts across disciplines and activities
- advisors and liaisons to the community
- policy experience and vision
- complementary to existing bodies
- to consult and connect

.. a broad mandate

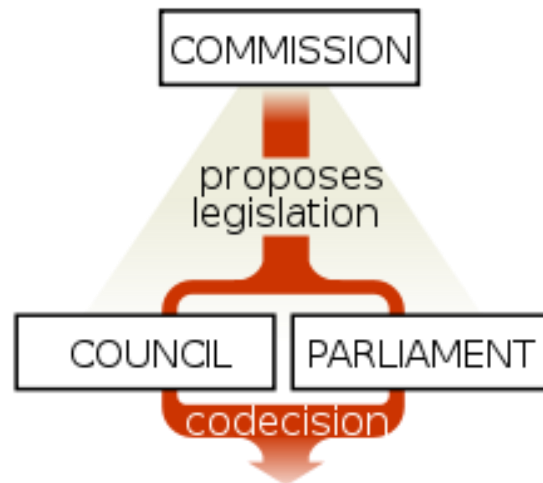
'.. the Scientific Panel for Health has been mandated to provide a comprehensive view on how to advance biomedical research in support of improving health in Europe, and to formulate recommendations to policy makers.'

The Lancet, 2016

<https://ec.europa.eu/programmes/horizon2020/en/h2020-section/scientific-panel-health-sph>

the SPH within the EC and H2020

- EU Horizon 2020 framework programme = legislation for funding for Research & Innovation



- Implementation by European Commission through annual/biannual work programmes and calls for funding (short-term focus)

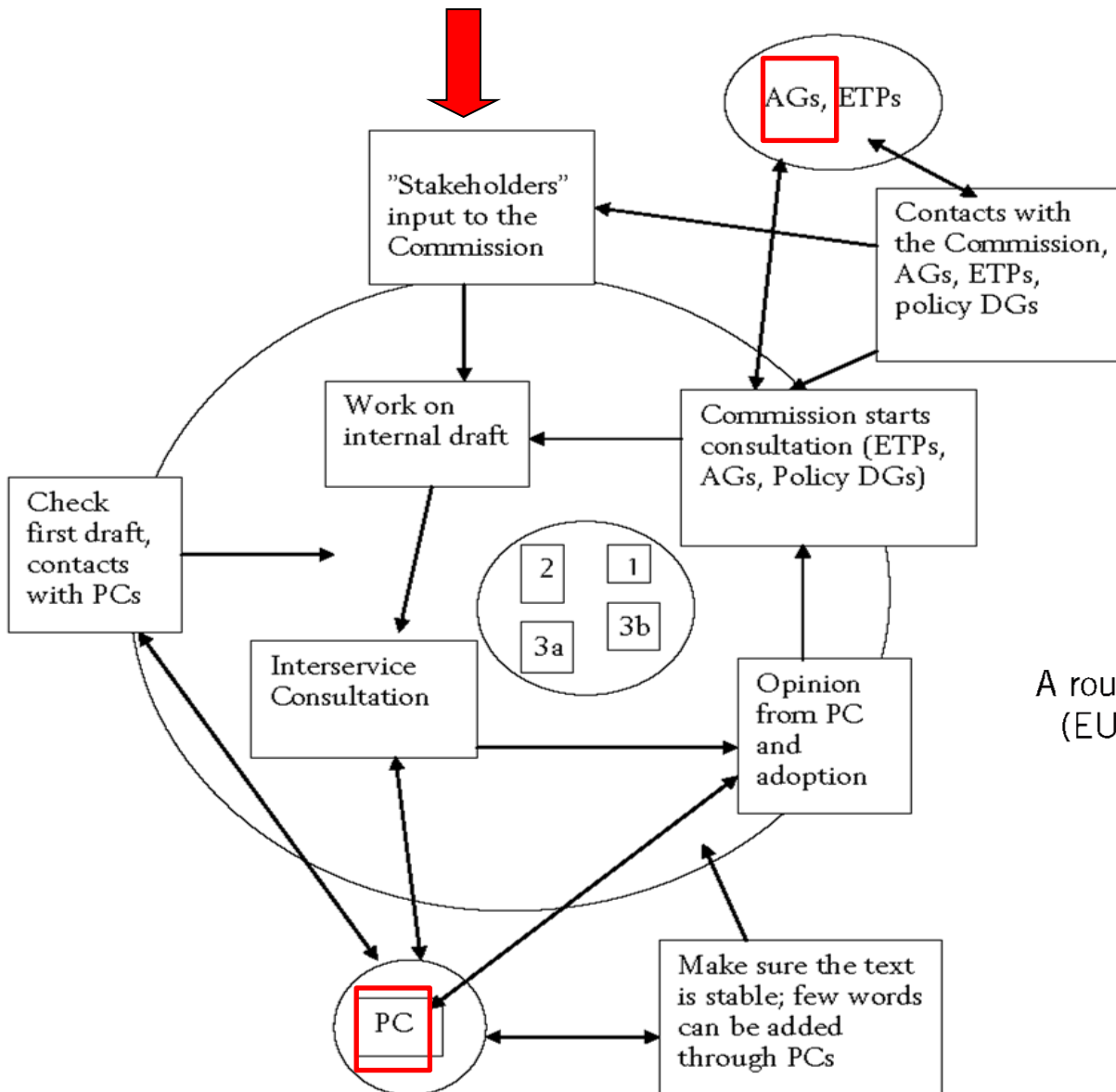
Annual/biannual Workprogrammes (in SC Health)
define calls for funding

Advisory Group (experts) prepares

> DG - directorate Health further elaborates

> Program Committee (member states rep's)

CONSULTATIONS



A rough guide to the FP7 Work Programmes (EU's seventh Framework Programme for Research).

Who can be involved in the preparation?

What to do, when and how?

Advice and input on research at EC

‘Expert Panels’ are in several areas within different DGs

At the level of the EC, initiatives Juncker & Moedas

- Science Advice Mechanism (SAM) - ‘*Science for Policy*’ - within DG R&I, assigned to Academies
- Research & Innovation Strategic Experts - High level group (RISE) - ‘*Policy for Science*’

SPH External Activities 2016

01/2016

- first draft Vision Paper

01/2016

- Public forum EC/SPH Better Research for Better Health

04/2016

- High-Level Meeting on Health Technology Assessment

06/2016

- Start external consultation on Vision Paper

09/2016

- Workshop on Workforce

09/2016

- Workshop on Long-Term Strategy

10/2016

- SPH Session at World Health Summit on Research Strategy

Jan. 21, 2016 SPH-EC forum in Brussels

‘Better research for better health’

- ✓ Cross-border collaboration
- ✓ Collaboration and alignment of stakeholders in the innovation cycle
- ✓ Aligning the regulatory framework with novel health research needs
- ✓ The research agenda and long-term research policies

well-attended, 400 participants - stakeholder organizations
excellent speakers and discussants
lively ‘antichambre’ discussions

BETTER RESEARCH FOR BETTER HEALTH

A vision for health and biomedical research from the Scientific Panel for Health*

Biomedical and health research are drivers for better health and patient care through innovation and implementation into practice of novel findings. In a changing society new challenges demand a new research and innovation framework and strategy.

*The European Commission's Scientific Panel for Health (SPH) is a science-led expert group based on the provisions of the Horizon 2020 Specific Programme that has been tasked with helping to achieve better health and wellbeing for all.
<https://ec.europa.eu/programmes/horizon2020/en/h2020-section/scientific-panel-health-sph>

... calling for research policies to:

- facilitate high quality cross-border collaboration within Europe and beyond,
- ensure a harmonized, simplified and transparent regulatory framework that supports innovation,
- nurture multi-stakeholder multi-disciplinary research across the innovation cycle, identifying common goals,
- involve citizens and patients, and
- create value through health in a knowledge-based society.

'a comprehensive policy'

June 2016 - paper + Qs sent out for consultation

Type of Organization/Affiliation	Number invitations sent	Number responses received	Response rate
EU-level health research organizations (research/ professional/ industry associations)	28	13 (+14)	46%
Governmental, Research Councils/Funding Agencies	41	8	20%
Other relevant orgs/individuals: sent for Dissemination/ information only	64	5	
European Commission- circulated by EC to DG SANTE, DG CNECT, DG RTD, others?			

Public summary – to be shared end 2016

SPH working groups

- **WG1** : hurdles in translation, in making new interventions available to patients, and in implementation of new treatments into clinical practice.
- **WG2**: long-term strategic research agenda. Priorities for development should marry unmet clinical and societal needs, to opportunities and strengths. The development of such a long-term agenda includes reflection on the process and broad consultation.
- **WG3**: the new workforce required for research, from ideas to implementation.

SPH working groups

- WG1 : hurdles in translation, in making new interventions available to patients, and in implementation of new treatments into clinical practice.
- WG2: long-term strategic research agenda. Priorities for development should marry unmet clinical and societal needs, to opportunities and strengths. The development of such a long-term agenda includes reflection on the process and broad consultation.
- WG3: the new workforce required for research, from ideas to implementation.

SPH working groups

- **WG1** : hurdles in translation, in making new interventions available to patients, and in implementation of new treatments into clinical practice.
- **WG2**: long-term strategic research agenda. Priorities for development should marry unmet clinical and societal needs, to opportunities and strengths. The development of such a long-term agenda includes reflection on the process and broad consultation.
- **WG3**: the new workforce required for research, from ideas to implementation.

Regulatory framework in research, innovation and implementation

Activities:

- 2015 internal workshop / debate at forum 2016
(F. Meunier EORTC, H.G. Eichler EMA, P. Timmers DG CONNECT)
- High-level meeting on HTA, April 2016
 - Delegates from EC DG SANTE, DG R&I, EuHTANet and SPH
 - Discussed opportunities and needs for cooperation on HTA methods/research

Regulatory framework in research, innovation and implementation

Next steps: finalize SPH recommendations

‘Need for an integrated approach to rules and regulations that affect biomedical and health research’

- a writing group to summarize current hurdles and gaps & propose specific points for further study by task group SPH + stakeholders
- opportunity for more input from researchers & patients in the GCP/ICH?
- scientific evidence gathering for HTA - EuHTAnet valuable group but needs continuity, inclusion in a comprehensive strategic action for health research?

The next generation health research workforce

Focus: Barriers/needs & models for workforce training/education

Activities: EC & SPH workshop, Brussels Sept. 27

- Invitation only: 45 participants from European-wide associations/organizations - EIT Health
- 3 roundtables: Moving academic education, rewards and incentives; Biotech, academia and industry mixed careers; & Workforce for big data in health research



The next generation health research workforce

Next steps:

- Finalizing and disseminating workshop report and executive summary
- SPH recommendations

Creating a next generation workforce will not occur through EU legislation...

- *implementation from bottom up*
- *hotspots and hubs*
- *role models*
- *funding incentives*

Long-term policy & strategy in health research

Activities:

- WG meeting 2015 / debate at Jan 2016 forum:
fragmentation <> impact of collaboration, participation

Long-term policy & strategy in health research

Activities:

- WG meeting 2015 / debate at Jan 2016 forum: fragmentation <> impact of collaboration, participation
- EC & SPH workshop on exploring mechanisms for strategy & prioritization, Brussels, Sept 28

Invitation only: 48 participants representing civic society, health professionals, governments/funders, academia, healthcare and industry.

- 3 roundtables: Expectations from society; EU wide research strategies; Impact and outcome as drivers for the research agenda.

- Invited workshops at World Health Summit, Berlin 11 Oct 2016
 - Speakers from EC, WHO, Johns Hopkins /NIH, FEAM
 - Global perspectives on research strategy and agenda setting



- ✓ Evidence-based mechanisms guiding strategic priority setting: outcome evaluation, medical needs, ..
- ✓ Critical appraisal of current mechanisms and continuous review is needed.
- ✓ Strategic priorities should be sufficiently broad to create a bottom-up excellence-driven implementation.

consensus on the value of the SPH platform

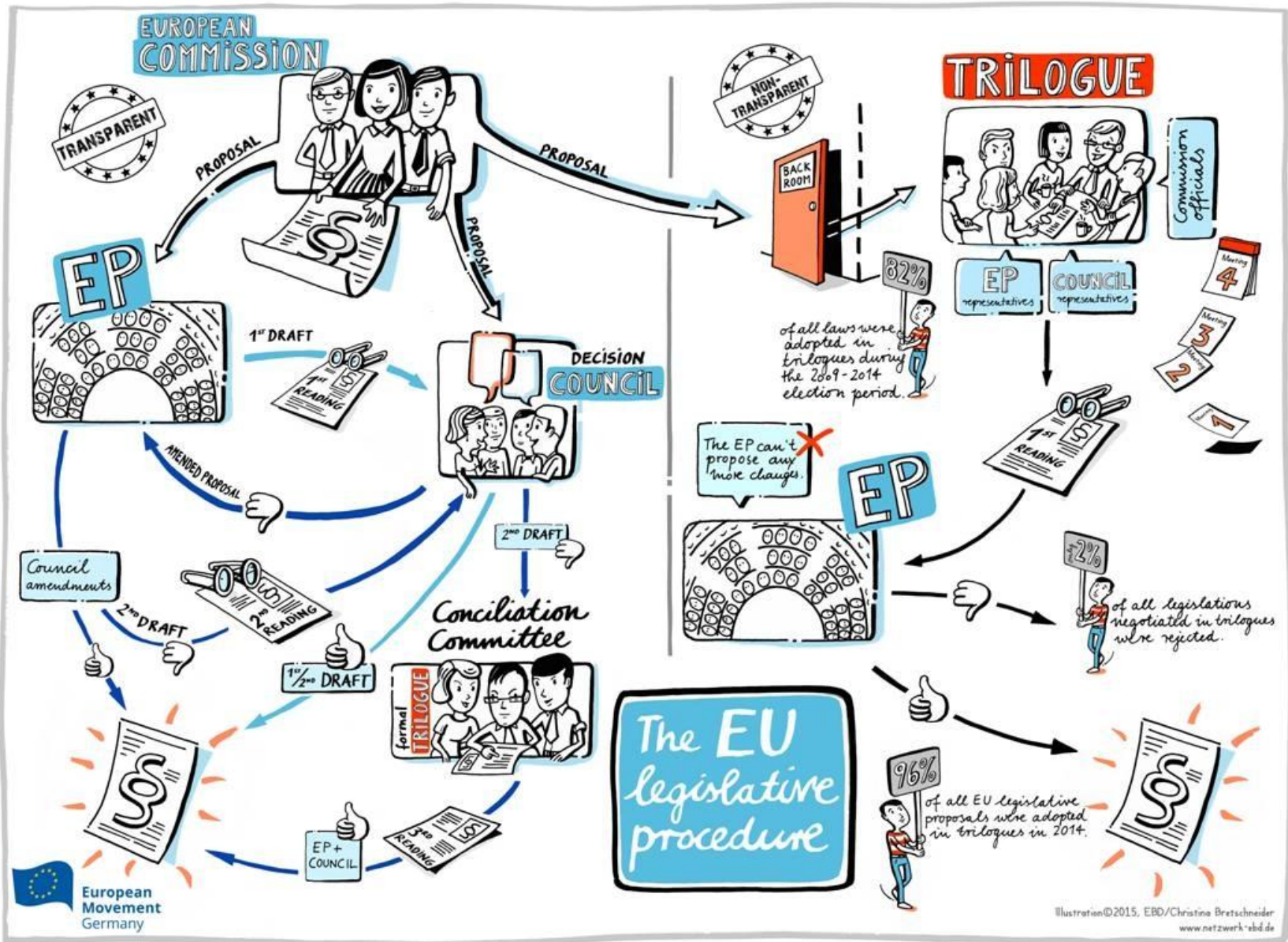
‘.. the Scientific Panel for Health is calling for the:

- development of a comprehensive policy for health research, defining and aligning common projects across EC directorates, the EU and member states,
- implementation of ‘health-in-all policies’

A long-term mechanism to ensure these policies and quality of research requires a science-led multi-stakeholders’ platform for European transdisciplinary health and biomedical research which could take shape as a **European Council for Health Research** or an **Institute for Health.**’

The Lancet, 2016

focus beyond H2020..





Thank you
for your input and engagement with the Scientific
Panel for Health.

and for your continued advocacy
and dissemination
of SPH recommendations.

SPH Conference 2017

European Commission, Brussels

June 2017

...further details soon